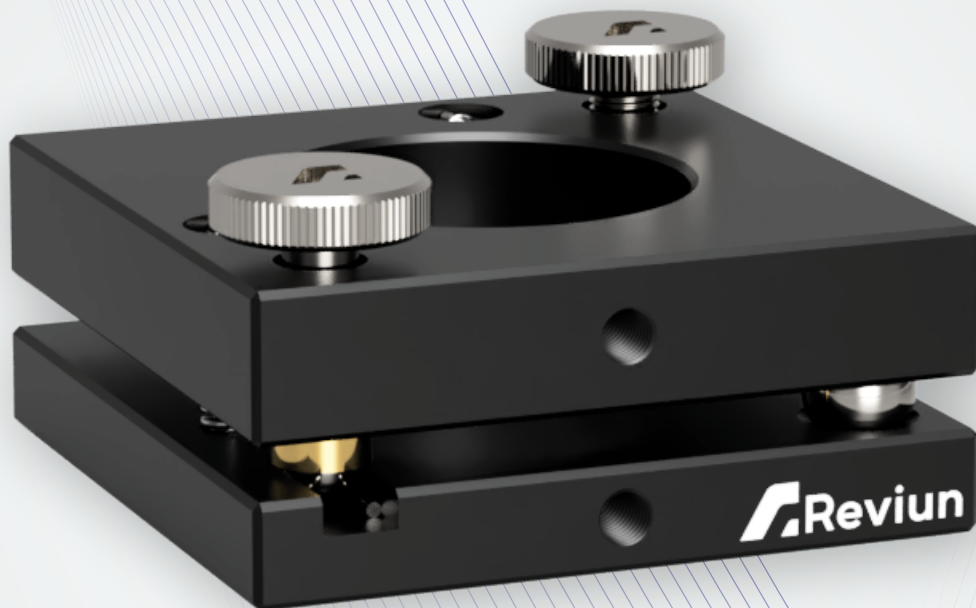




EXPERIENCE EXCEPTIONAL STABILITY AND PRECISION WITH OUR
ADVANCED KINEMATIC MOUNT DESIGNED
FOR CIRCULAR OPTICS.



**KINEMATIC MOUNT FOR
CIRCULAR OPTICS**

REVIUN KINEMATIC MOUNT FOR CIRCULAR OPTICS

Introducing our robust Kinematic Lens Mount: a sturdy and durable solution constructed with high-quality aluminum and a sleek black anodized finish. Engineered specifically to securely hold lens and lens tubes with a diameter of 28mm to 24mm or 1.10 to 0.95 inch, this mount offers exceptional stability and precise positioning. With its two axes angular adjustment and two M5x0.25 adjust screws, you can easily achieve optimal alignment with a fine tip and tilt angle of $\pm 3.5^\circ$ gradations in the fine adjustment screw provide with accurate angular changes in the mount by hands. The mount's strong spring further enhances stability, while the M4-8/32 tapped hole enables convenient mounting on standard posts and holders. Experience reliability and versatility with our Kinematic Lens Mount for seamless optical integration.



SPECIFICATIONS

OPTIC DIAMETER (mm) - 28 to 24

OPTIC TYPE - Circular

MINIMUM OPTIC THICKNESS (mm) - 6.00

OPTICAL AXIS HEIGHT (mm) - 25.00

ANGULAR ADJUSTMENT - $\pm 4^{\circ}$

NUMBER OF ADJUSTERS - 2

TYPE OF ADJUSTERS - Thumb Screws

ADJUSTER THREAD (METRIC) - M4x0.25

CLEAR APERTURE (mm) - Ø24.00

MOUNTING - M4 Tapped Holes x 2

CONSTRUCTION - Aluminium Base, Stainless Steel Screw, Brass Bushings

“WE PROVIDE OTHER KINEMATIC MOUNTS FOR 1/2”(12.5mm), 2”(50.8mm), 3”(76.2mm), AND 4”(101.6mm) CIRCULAR OPTICS.”

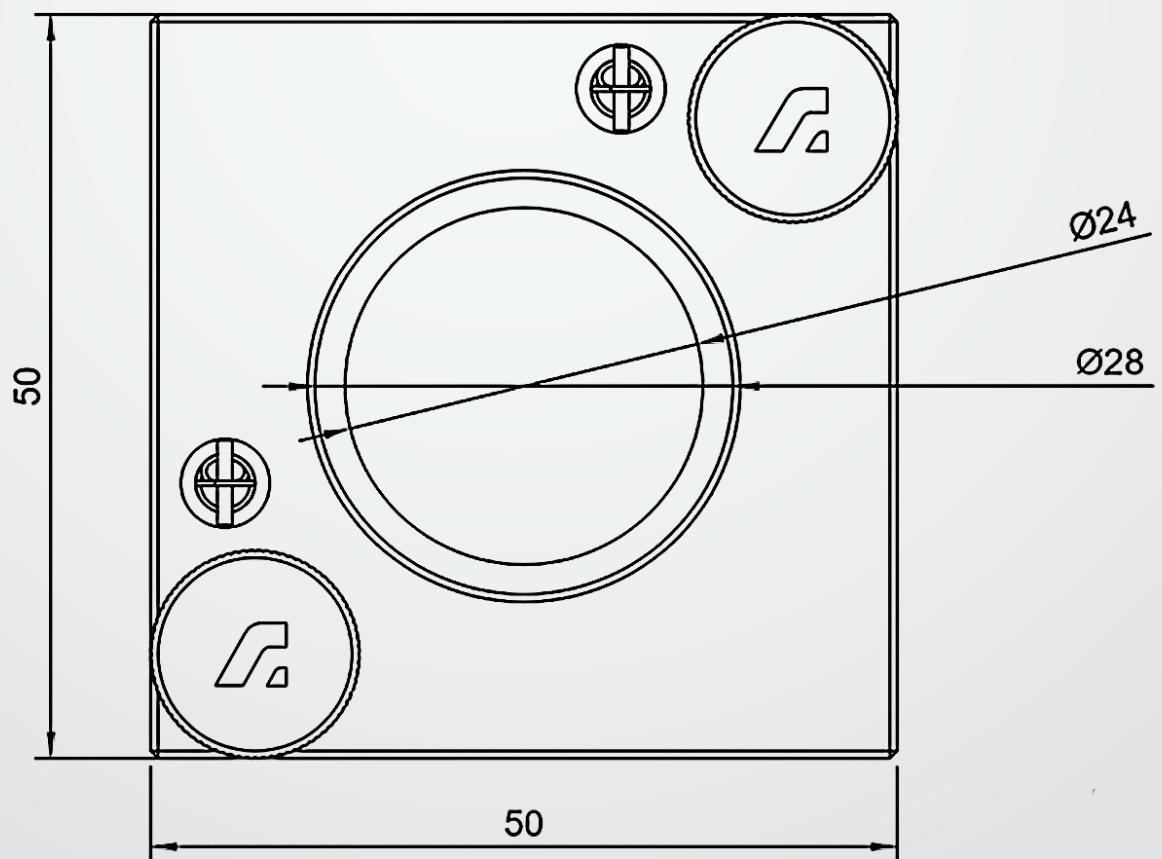
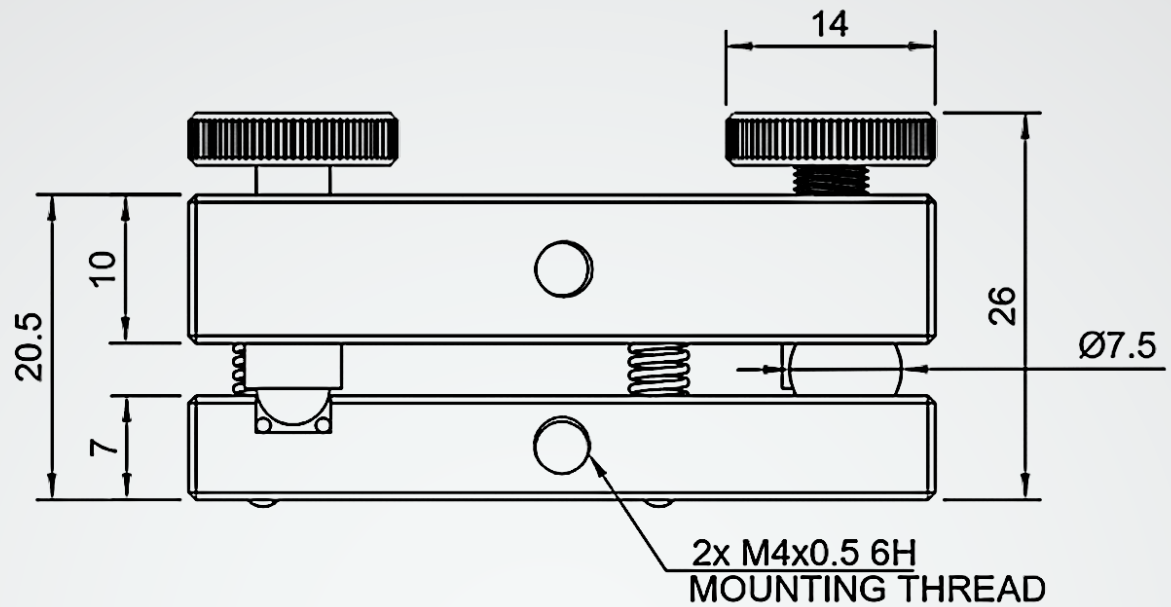
“REVIUN PRODUCTS ARE SHIPPED WORLDWIDE INCLUDING ONE-YEAR WARRANTY AS STANDARD.”

APPLICATIONS

- **Laser Systems:** Ensures precise alignment and stability of lenses in laser systems, optimizing performance.
- **Imaging Systems:** Facilitates accurate lens positioning for improved image quality in microscopy and machine vision.
- **Optical Metrology:** Enables precise alignment of optical components, ensuring accurate measurements.
- **Fiber Optics:** Holds and aligns fiber optic components for efficient light transmission.
- **Spectroscopy:** Allows for precise alignment of optical elements for accurate spectral analysis.
- **Optical Testing and Research:** Provides precise adjustments and alignment for reliable experiments and measurements.

“WE CAN CUSTOMISE THIS PRODUCT IN ACCORDANCE WITH YOUR APPLICATION, REQUIREMENTS INCLUDING ERGONOMIC DESIGN”

TECHNICAL INFORMATION





SALES & SUPPORT



+44 7428538838



INFO@REVIUN.CO



**REVIUN LTD,
UNIT 00.02,
DMU INNOVATION CENTRE,
49 OXFORD ST,
LEICESTER LE1 5XY.**



<https://reviun.co/>